

Thank you for  
choosing Ambry

# Saliva Instructions

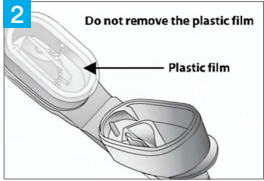
ORAGENE® DX COLLECTION

For any packing and shipping related questions please call  
949.900.5500

*For more information, visit [ambrygen.com/IFU](https://ambrygen.com/IFU)*



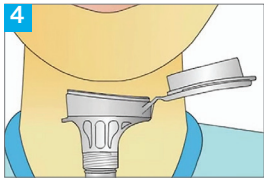
- Open the new saliva collection kit
- Remove the saliva collection tube
- Write patient's name, date of birth, and collection date on the tube



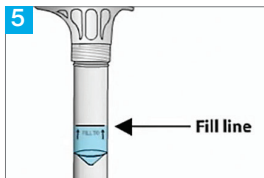
- Lid contains a clear solution
- Do not puncture or remove the plastic film



- Do not eat, drink, smoke, or chew gum for 30 minutes before giving your sample
- TIP:** Before delivering saliva sample, relax and rub your cheeks gently for 30 seconds to help create saliva



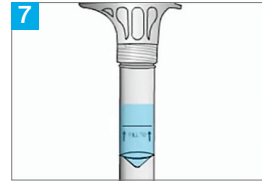
- For optimal results, please deliver saliva sample within 10 minutes
- TIP:** Imagine a candy, lemon, or favorite food in your mouth



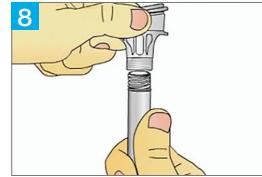
- Spit until liquid saliva, NOT bubbles, reaches the fill line



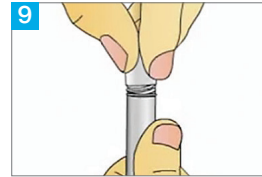
- Once you have reached the fill line, hold the tube upright and close the lid by firmly pushing down until you hear a loud click



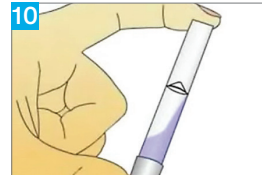
- Once the clear fluid is released into the tube, the liquid will be higher than the actual fill line on the tube



- Remove funnel from the tube and discard



- Use small cap to close the tube tightly



- Invert the capped tube 5 times
- Place capped tube back in plastic box

*NOTE: For optimal results, deliver saliva sample within 10 minutes. For questions or concerns regarding your saliva sample, please contact your Ambray representative.*